

! WAŻNE: KONIECZNIE PRZECZYTAJ PRZED MONTAŻEM PODNÓŻKA


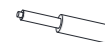






1. Zapobiegij uszkodzeniu podnóżka podczas rozpakowywania! **Unikaj** używania ostrych obiektów takich jak **nożyczki, czy nóż**. Podmiot GAMVIS nie odpowiada za tego typu uszkodzenia produktu.
2. Dokręcaj wszystkie śruby w podnóżku co **około 1-2 miesiące** w celu **poprawienia komfortu** użytkowania oraz **wydłużenia żywotności produktu**.
3. W przypadku napotkania szczególnych trudności podczas montażu prosimy o **obejrzenie filmu instruktażowego** dostępnego na **Youtube.com/Gamvis.com** lub o kontakt pod adresem **info@gamvis.pl**

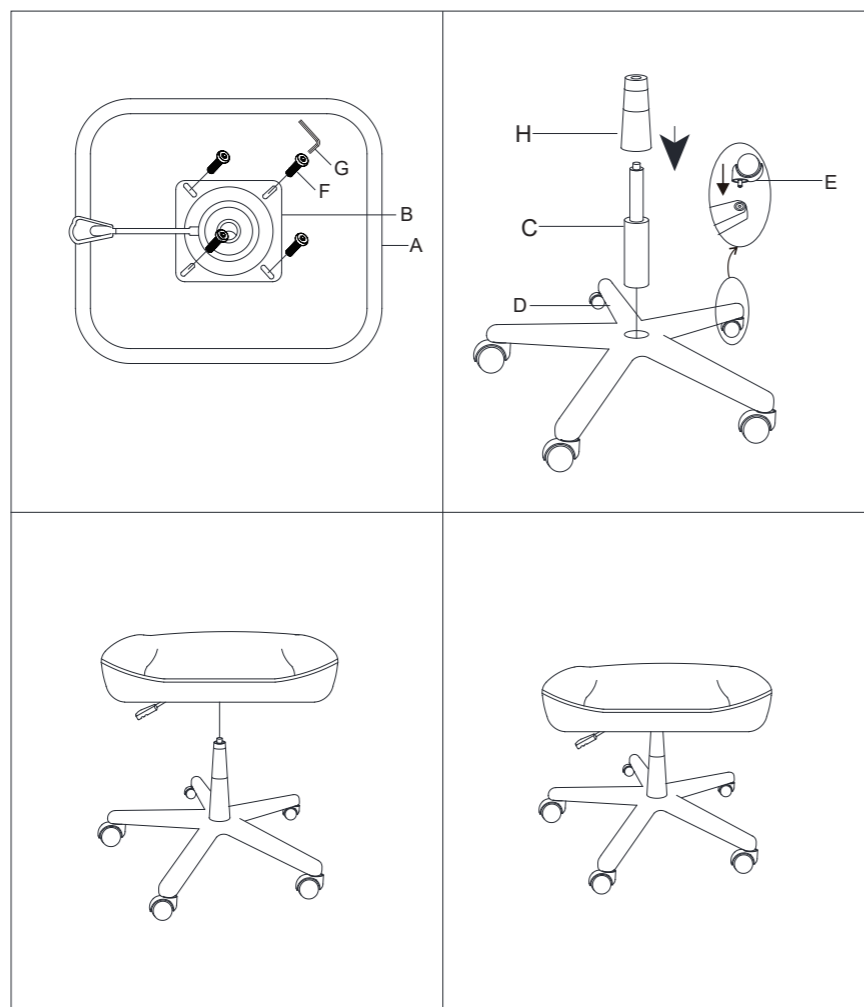
! IMPORTANT: PLEASE READ BEFORE ASSEMBLY









1. Take care not to damage the footstool when unpacking and removing protective foil. **Avoid the use of sharp objects** such as a **knife or scissors** where possible.
2. To enjoy optimal performance, **regularly check** the screws **EVERY 2 months** and adjust or **tighten as necessary**.
3. If you encounter difficulties in assembling your footstool, please **WATCH ASSEMBLY VIDEO** on **Youtube.com/Gamvis.com** website or contact **info@gamvis.eu** for support and advice before using product.

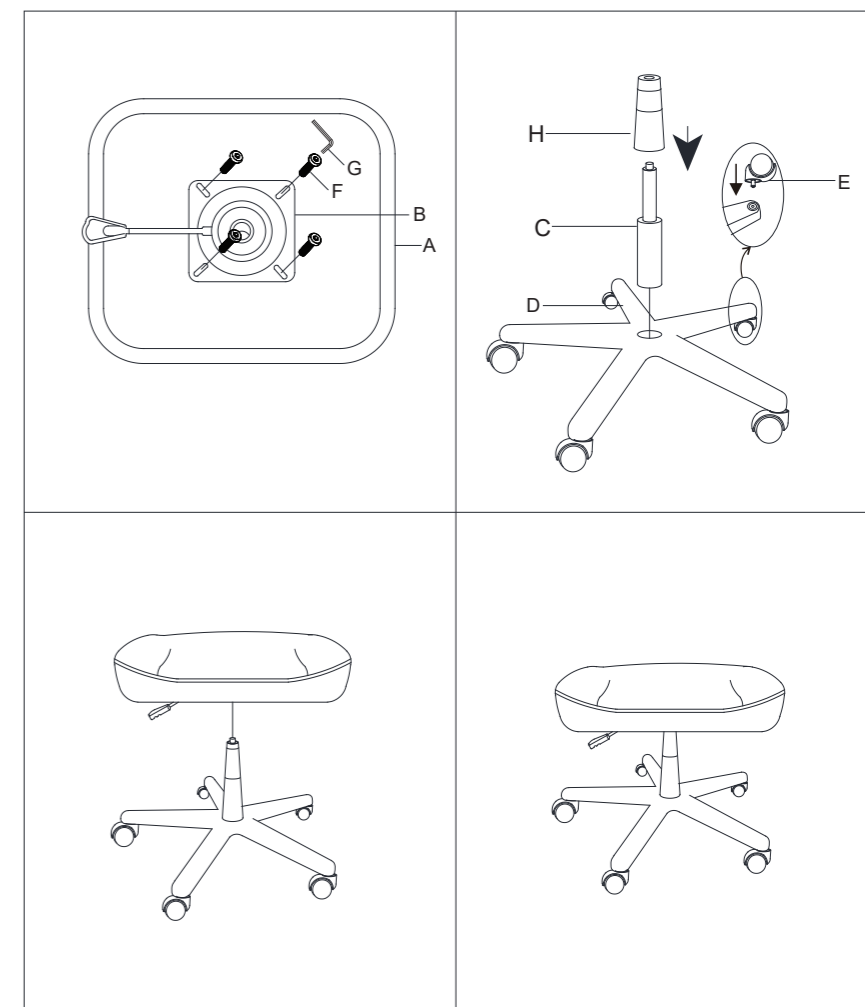
UWAGA! Prosimy **NIE** aplikować środków czyszczących bezpośrednio na materiał!

NOTE: Do NOT apply polish / cleaning liquids directly on the footstool!

A	1	
C	1	
E	5	
G	1	
B	1	
D	1	
F	4	
H	1	



A	1	
C	1	
E	5	
G	1	
B	1	
D	1	
F	4	
H	1	



UWAGA! PROSIMY UŻYWAĆ PODNÓŻKA ZGODNIE Z JEGO PRZEZNACZENIEM

WARNING PLEASE USE THE FOOTSTOOL IN ACCORDANCE WITH ITS INTENDED PURPOSE